

Action in
rural Sussex

Guide to Services



*A living and
working countryside*

Guide to Services



It's 2011 and this year Action in rural Sussex (AirS) celebrates its 80th birthday. For eight decades we have been supporting people in rural Sussex to get the help they need. We have continually

adapted to changes in rural communities, and we will continue to do so with undimmed commitment.

Now our minds are on taking the right path to deliver the services people will need in the next 80 years.

Like everyone else, we are facing a period of great change and no small amount of uncertainty, but we are confident that our expertise and standing in communities will help us to evolve and succeed in our charitable aims. We are proud of our partnerships with local authorities and community organisations, and we know that those partnerships are essential to the design and delivery of community led services on the ground, in each of our parishes and right across East and West Sussex.

At AirS we are excited about the possibilities of co-designing projects and services with communities, using our infrastructure and skills with people in villages and market towns to create flexible solutions for specific local challenges. We know that what works in one place may or may not work elsewhere, and no other organisation in Sussex specialises in understanding the whole rural picture as we do.

Services for the disadvantaged and rurally isolated: specialist direct delivery services



Action with rural families Access to services and information for young people, including the 'Your bus Your call' mobile service

We address the scarcity of services for young people in rural locations by offering evening sessions in village halls such as drop-in services, one-to-one support and health and well-being-based group work. Our expert team can design services to meet your specific needs.

For: Young people, rural communities

Action with rural families

Children's Outreach and Parenting Extended Support (COPES)

AirS provides direct support to families (children and parents), working with over 100 schools and other agencies through a referral system. We also organise parenting courses, family activity days and other events that provide support to rural families.

For: Children, parents, families, parenting groups

Rural health and wellbeing

Village Care – programme to support vulnerable, isolated or older people in rural communities



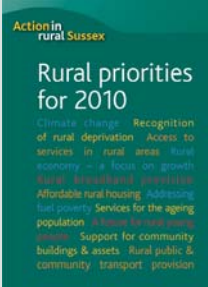
AirS offers a range of services that assist communities in addressing the health and well-being of older, frail and more vulnerable people within their communities. Often working with local groups we can help with setting up and organising a whole range of activities and services that meet the local needs of older people and those who are vulnerable or isolated.

For: Older and isolated people, community groups and organisations

Rural advocacy and influencing

Rural research

Research, policy development, surveys and data analysis



AirS has developed expertise and experience in policy analysis, interpretation and advice with regard to rural issues and/or rural delivery of services. We can provide a range of services to both local authorities or public sector bodies as the 'rural experts' and to local communities who may wish to undertake feasibility studies or needs assessments, surveys or other data analysis.



Rural research

Rural seminars, conferences, training and events

We can organise, manage and deliver conferences, seminars, learning sessions and community events on issues affecting rural areas and have long standing expertise and experience of such events. AirS has a well earned reputation for effective partnership with other organisations to offer these events both within and beyond Sussex.

For: Individuals, community groups, organisations and public sector bodies interested in rural issues

Rural advocacy

Rural advocacy



AirS undertakes a range of advocacy work that is informed and identified from its research and data analysis as well as from its many projects and initiatives delivered with rural communities across Sussex.

"No other organisation in Sussex specialises in understanding the whole rural picture as we do. ...and, perhaps most important of all, we can provide help for local people with the commitment, ideas and energy to make a positive change in their own communities."

Partnership support

Partnerships for rural Sussex – service to strategic partnerships to ensure delivery to rural Sussex



Partnerships for rural Sussex

Rural Partnerships

Rural Partnerships in both West Sussex and East Sussex provide an opportunity for rural stakeholder organisations to discuss, network, understand and influence local rural issues.

For: Rural stakeholders and interest groups

If you are interested in one or some of these services we will be very happy to discuss this with you.

Please contact:

**Emma Drew,
Business Development Adviser**

Email: Emma.Drew@ruralsussex.org.uk

Tel: 01273 473422

Who we work for and who we work with

Rural people are at the centre of all that AirS does. The diagram on this page illustrates this and the range of activities that are incorporated in or supported by the services provided by AirS.

The outer circles illustrate the advocacy role that AirS has with partners, decision makers and policy makers. AirS, through its various projects and bespoke research, is able to review practice, collate evidence and data to inform others about the needs of rural communities.

Looking forward...

As the world changes, we expect some trends to become predominant:

- help for the most vulnerable
- help to overcome barriers to work and business growth
- help to create a meaningful future for those young people without education, employment or training
- support for those with physical or mental health challenges

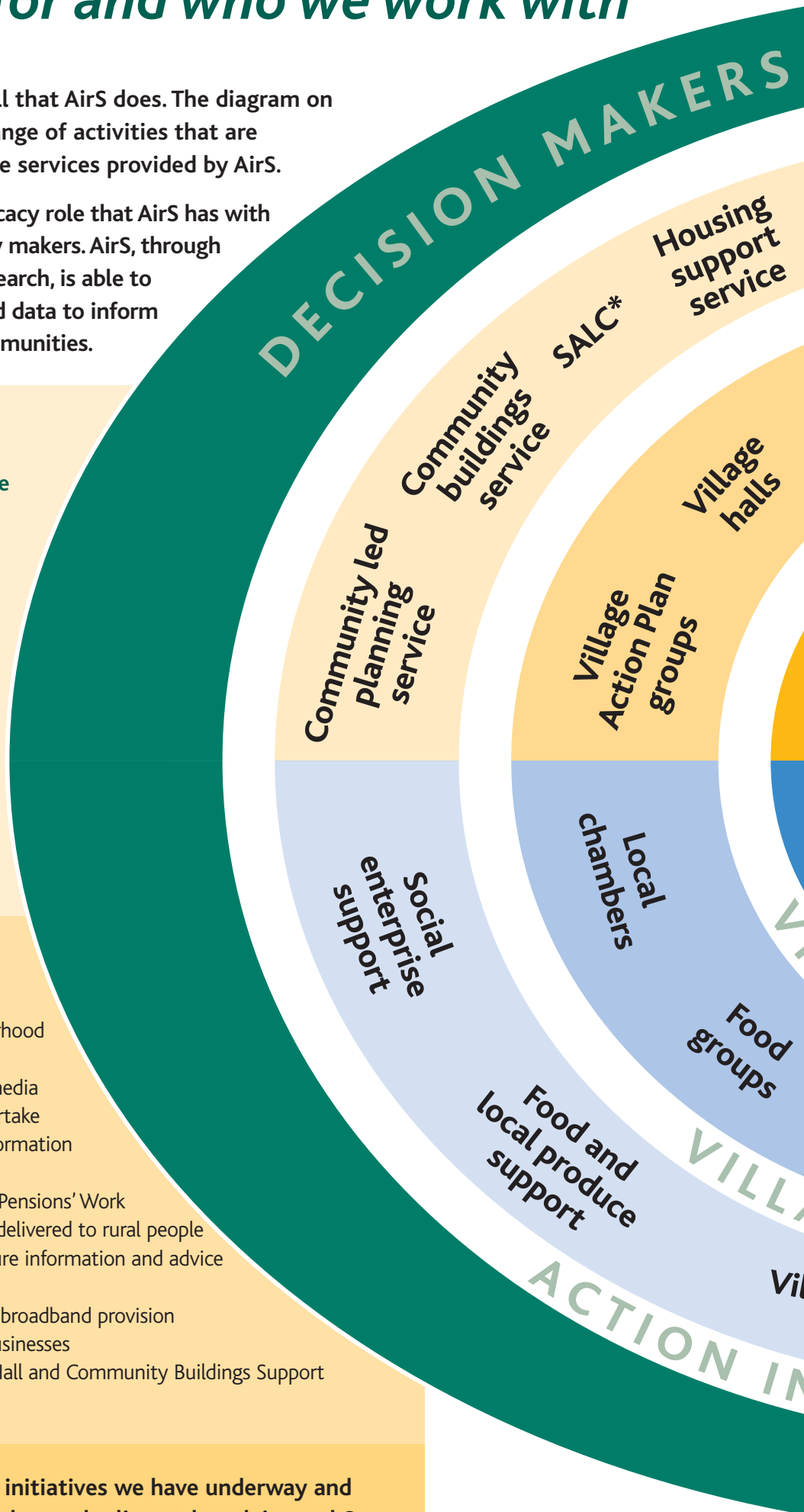
and, perhaps most important of all:

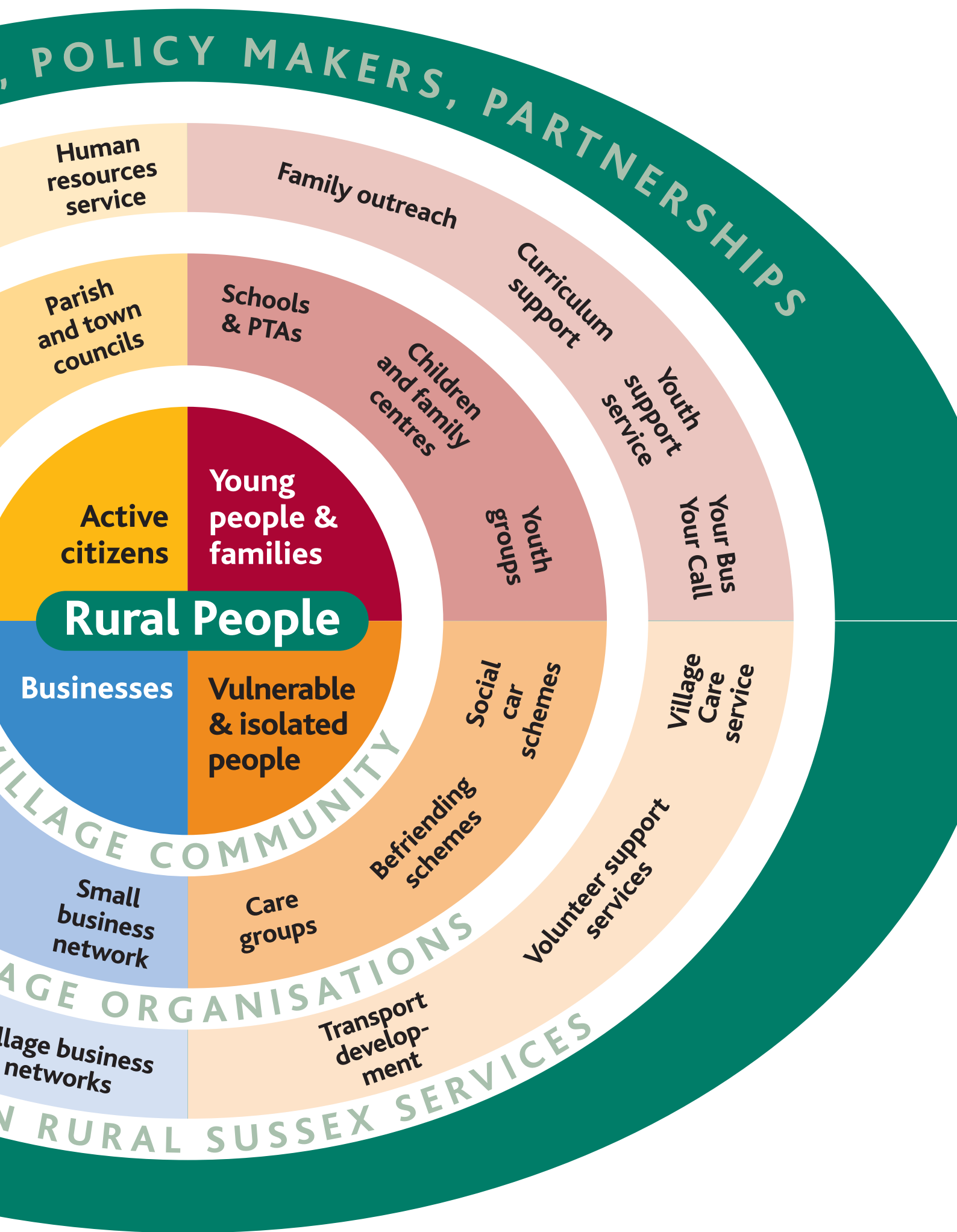
- help for local people with the commitment, ideas and energy to make a positive change in their own communities.

AirS is committed to transforming and updating its services to keep them relevant to local needs. In 2011 we are:

- providing a new localism and neighbourhood plans support service
- introducing Community21 as a social media site for individual communities to undertake community consultations and map information and local services
- working with Department of Work and Pensions' Work Programme to ensure that services are delivered to rural people
- working with Digital Switchover to ensure information and advice is available throughout Sussex
- working in partnership to improve rural broadband provision
- increasing our services for rural small businesses
- transforming and updating our Village Hall and Community Buildings Support and Advice Service.

These are just a few of the current initiatives we have underway and reflect the commitment of AirS to those who live and work in rural Sussex.







Action with communities Social enterprise advice

AirS provides help and support for existing and emerging social enterprises. Our support can enable charities to become more entrepreneurial, help enterprises to plan for the future and also kick start new project ideas.

For: Individuals, groups, entrepreneurs, community groups, public sector organisations



Action with communities Employment and human resource support service for local councils and small organisations

We have created an employment service that is designed to provide the day to day knowledge essential in dealing with today's employment matters. The service includes an employment handbook which is 'user-friendly', supportive and aims to outline what is 'best practice' when it comes to employing people, a helpline service to AirS CIPD qualified HR Manager, and regular updates on changes in legislation and other key HR issues.

For: Local councils, community organisations

Action with communities Community buildings and community assets advice and support service



This is a subscription and consultancy service for management committees and charity trustees of community buildings. AirS can provide the expertise and support needed to assist with the management, re-development and governance of community owned assets, especially village halls.

For: Village hall committees, community asset management committees

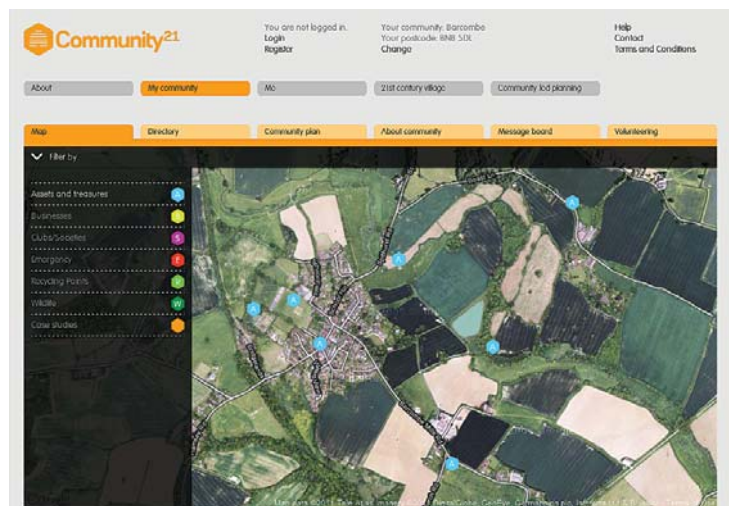


Action with communities Community facilitation and training for groups and organisations



AirS provides a range of training, facilitation and consultation support service for community groups or those needing to engage rural communities. These services are flexible and can be co-designed with the local community or other bodies to ensure that particular needs are met and effective consultation is achieved.

For: Parish and town councils, community groups and organisations



Community 21 – coming soon! An online service for rural community activists

A web-based platform for community led plans and neighbourhood plans that will also enable local people to register their views and make decisions about what happens in their neighbourhood or village. In summary, Community 21 will be a social networking site for communities.

For: Parish and town councils, community led planning groups, market town partnerships, public sector bodies



Rural health and wellbeing Community, food, growing and cooking projects

This work includes fostering stronger farmer–community links; healthy eating initiatives; local food use in after school cookery clubs and school meals; training in fruit growing and cookery skills; planting local apple varieties in orchards and support in setting up and running village shops and farmers’ or village markets and other local food outlets. Currently the Fruit Futures Project has a target of planting over 500 apple trees of mainly Sussex varieties in over 40 school and community orchard.

For: Children, young people and families, local food producers, local food outlets and other local businesses, schools and teaching staff; rural communities, voluntary and community groups



Action with rural businesses Information, support for community engagement, involvement, support for small/micro/home-based businesses and networking

AirS is working with partners from the private, public and voluntary sectors across the South East to develop a range of services that meet gaps in support for rural businesses, to include help with networking, skills, enterprise readiness, one-to-one support, finance and marketing. We are also developing local links between rural employers and those seeking employment and work experience locally.

Who pays: Small businesses, entrepreneurs, young people not in employment, education or training, local employers, parents returning to work, local businesses / people facing barriers to growth, rural communities

Capacity building services for community anchor organisations and groups

Action with communities

Sussex Associations of Local Councils (SALC)



Membership of SALC provides local councils with access to advice and guidance up to 7pm on weekdays and membership of the District and National Associations of Local Councils. Professional, legal and procedural advice is available, plus a range of training courses and events for clerks, councillors and council chairmen/women. We offer a range of other services including clerk recruitment and locum services and an e-newsletter sent regularly to all members.

For: Town and parish councils – Councillors and Clerks



Action with communities

Community led planning facilitation and advice

Advice and project management consultancy for communities developing and implementing a community or neighbourhood-led plan or market town healthcheck

For: Parish and town councils, community led planning groups, market town partnerships, community leaders and activists

Action with communities

Affordable housing enabling services



AirS can provide important professional and independent advice services for the development of affordable housing schemes, including local housing needs surveys, project management and advice throughout the process, and support to community land trusts. We work with a range of local authorities and housing providers as well as the local community to increase the number affordable houses for local people.

For: Parish councils, residents, communities

Capacity building services continue on page 6

Action in rural Sussex

AirS has four aims that are the basis of its work

- 1 Reduce the incidence and impact of disadvantage and poverty** on people living in rural areas.
- 2 Increase the capacity of rural communities to manage change** for the benefit of all their members.
- 3 Inform and amplify the voices of rural communities** to influence public policy.
- 4 Support partnership initiatives** in pursuit of the first three aims.

Our vision for rural Sussex

“That Sussex is a place where an **inclusive active community life** is valued equally alongside **economic success** and **environmental protection.**”

Contact us

To find out more about Action in rural Sussex please contact:

Action in rural Sussex
212 High Street
Lewes
BN7 2NH

Tel: 01273 473422

Email: info@ruralsussex.org.uk

www.ruralsussex.org.uk