

About

My community

Me

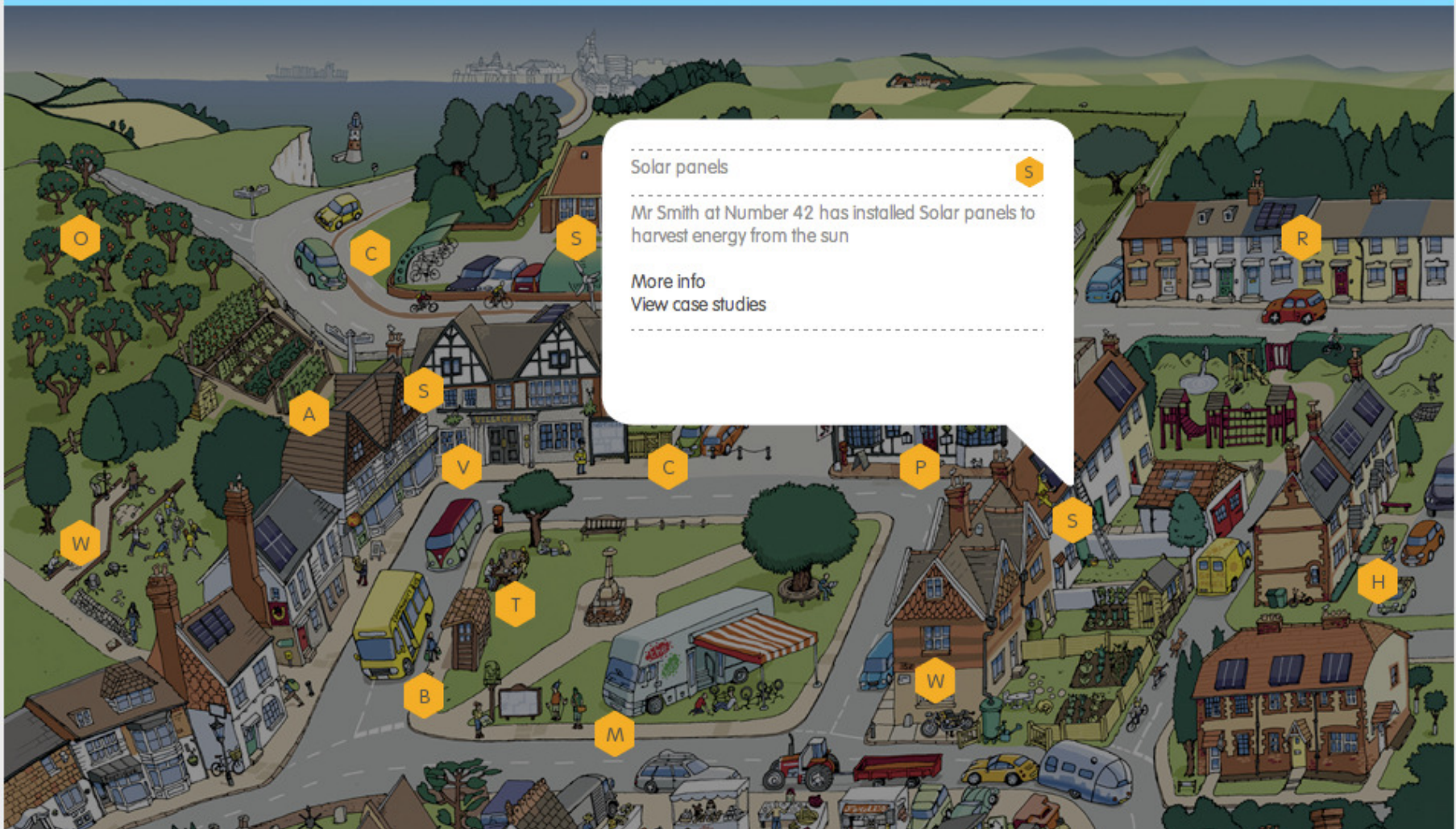
21st century village

Community-led planning

Map

Community initiatives

Case studies



Solar panels



Mr Smith at Number 42 has installed Solar panels to harvest energy from the sun

More info  
View case studies

[About](#)

[My community](#)

[Me](#)

[21st century village](#)

[Community-led planning](#)

[Map](#)

[Community initiatives](#)

[Case studies](#)

## Solar bank for community energy capture



An energy bank can provide energy for more than one home and can be owned by a community as an investment.

Advantages are that it is shared cost and risk and a proportionate saving per head.

Supplier for this case study is [Southern Solar](#)

[More info](#)

---

## Solar electric / photo voltaic (for electricity)



Solar PV, Maresfield, East Sussex  
Providing electricity.

Solar PV  
A domestic 2.1kw monocrystalline photovoltaic system providing electricity. We would anticipate the following performance:  
Annual electricity output: 1657kWh  
Annual cost saving: £816  
Annual carbon benefit: 0.94t CO2

Supplier [Paynes Energy Solutions](#)

[About](#)

[My community](#)

[Me](#)

[21st century village](#)

[Community-led planning](#)

[Map](#)

[Directory](#)


[Community plan](#)


[About community](#)


[Message board](#)


[Volunteering](#)


Filter by

Assets and treasures 


Businesses 

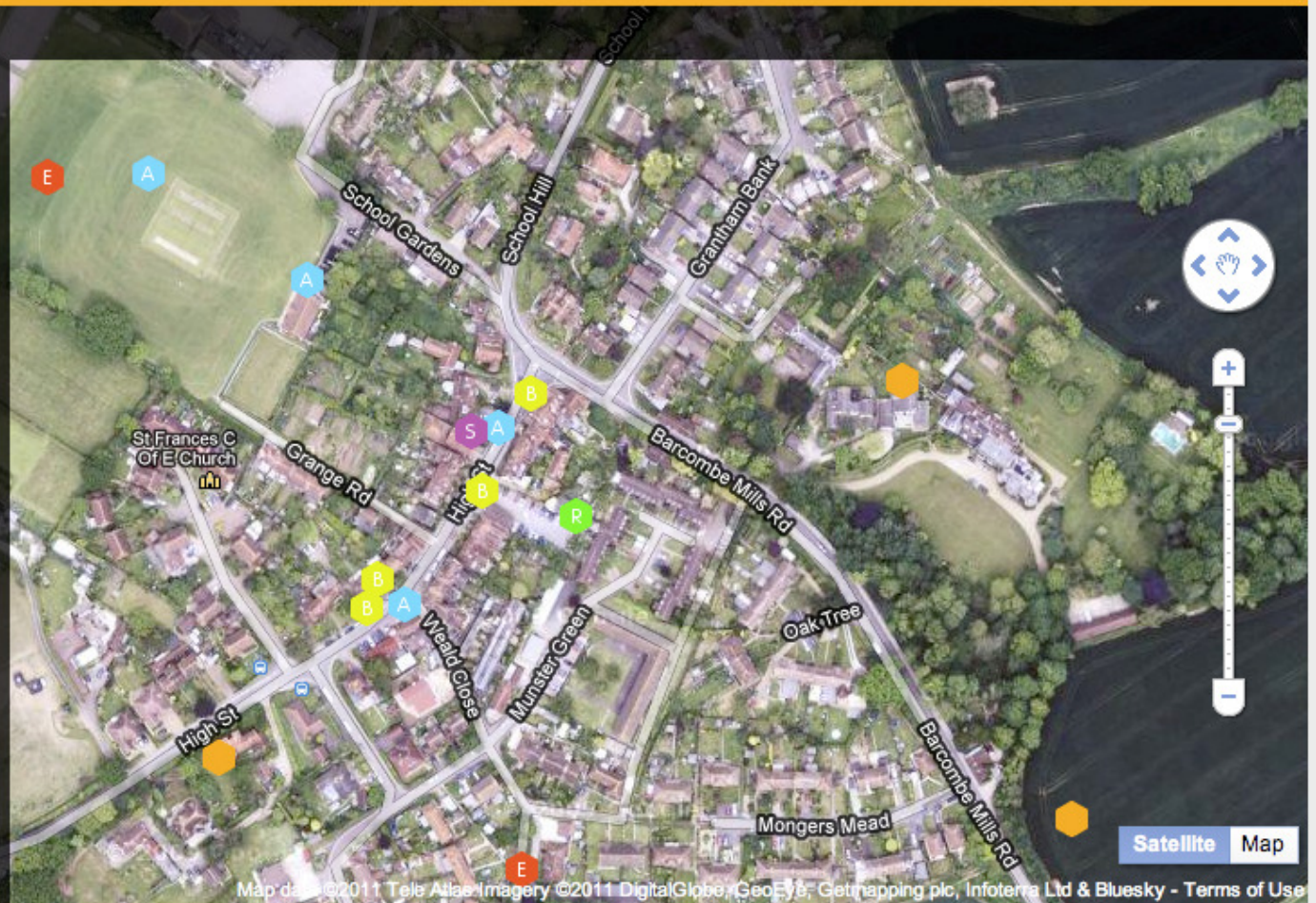
Clubs/Societies 

Emergency 

Recycling Points 

Wildlife 

Case studies 



[Satellite](#) [Map](#)

## Summary: community led plans, Localism and Community21

- **Saves money, resources and time**
  - Less printing, less direct cost
  - Analysis – electronically generated results
  - Income generation through advertising revenue
- **More community engagement**
  - Follow up consultation surveys and analysis
  - Recruitment – volunteers/ interest in specific projects/ initiatives
  - Publicly available as one central point for information
  - Links with local authorities and service providers
- **Own web pages for community/ for voluntary organisations/ for businesses**
  - Alternative website or link to existing
  - Google mapping facility
  - Local Directory of facilities and services self generated
  - Wider reach – compare and consult with neighbouring / like communities
  - Case Studies



Social network and planning toolkit for sustainable communities